

A close-up photograph of a person's foot stepping onto a wet, dark-colored tile. Water is splashing around the foot, creating a dynamic and somewhat blurry effect. The background is bright and out of focus, suggesting an outdoor or well-lit indoor setting.

ANTI SKID TILES

300x300mm

OBL Awards & Accolades

Realty+ recognizes the best of the best within the ranks of Indian Real Estate



Website of the Year-Jan 2020
for www.orientbell.com
(India's construction & design industry)



Brand of the Year-Jan 2021
(Flooring Idea-Tiles & Ceramic)



Best Infrastructure Brands
(2021)



Best Omnichannel Retail Model
Winners Future of Retail Summit & Awards 2020



Customer Retail Journey Innovation
Winners Future of Retail Summit & Awards 2020



CEO with HR Orientation
ZEE BUSINESS
National Human Capital Leadership Congress & Awards

About OBL

Orient Bell Limited (OBL) is amongst the largest manufacturers of Wall and Floor Tiles. Established in 1977, OBL has been a pioneer in the Industry with a focus on customer-centric innovation.

First to manufacture ultra-vitrified tiles, new product designs & development is a continuous process at OBL. As a result it has an extensive range of tiles with various finishes & textures. It has 4 patent-pending technologies: Forever Tiles, GermFree Tiles, Cool Tiles & Life Tiles.

To display extensive range of tiles, we have a chain of signature showrooms. Privileged to be associated with premier architects and construction agencies of the country, it also counts most leading developers as well as government & public sector institutions as its customers.



- The ISO 9001:2015 accreditation for our quality control management systems reflects the quest for manufacturing international standard products.
- In 2015 our Sikandarabad plant was awarded with prestigious ISI certification for its products.
- In May 2000, OBL was awarded ISO 14001 certification by the internationally recognised BSI Management Systems, UK.
- Our manufacturing units are ISO 14001:2015 certified, the most complete and global expression for an environment friendly industrial company.
- We have been awarded OHSAS 18001 Certification for Health & Safety Standards. No waste water is ever discharged from our factory.
- We were also awarded with "Certificate Of Merit" in 'National Energy Conservation Award' 2016 organised by Ministry of Power for saving Power and Fuel consumption.

Creating Solutions for Schools



Tile Mural-Periodic Table



Tile Mural-Suryanamaskar

There are 1.6+ million schools in India. The top 100 thousand schools benefit from the innovation trending in the education space.

However, for the 1 million schools at the bottom of the pyramid, the quality of basic education remains a challenge. Lack of textbooks, parent & student apathy compound the problem.

To make an impact on learning outcomes we designed tiles having educational content that is relevant for all classes. These tiles, applied as a mural on a classroom wall, create a positive learning environment as well as keep the walls looking clean with minimal maintenance requirements.

As a part of our CSR initiative, this unique range of educational tiles has revamped quite a few schools in Delhi, UP and Rajasthan. The impact makes the effort worthwhile.

Impact on Learning Outcomes

36%

increase in enrolments
in just 2 years

31%

reduction in absenteeism,
reduced from 53% to 12%
in 2 years



Increased performance
in exams

- ✓ Creates an interactive learning experience
- ✓ Enables quick revision of topics
- ✓ Active visual learning while on the move.
- ✓ Increased retention of complex concepts
- ✓ Reduces violence & bullying in school premises.
- ✓ Scribble proof

* Data collected from schools revamped by Orientbell as part of their CSR initiative.

INDEX

ANTI SKID

01-07

| | |
|------------------------------------|----|
| BDM ANTI SKID EC FUSION BROWN | 08 |
| BDM ANTI SKID EC FUSION COFFEE | 08 |
| BDM ANTI SKID EC FUSION IVORY | 05 |
| BFM ANTI SKID EC COFFEE BROWN | 06 |
| BFM ANTI SKID EC BLUE | 04 |
| BFM ANTI SKID EC BROWN | 06 |
| BFM ANTI SKID EC GREEN | 10 |
| BFM ANTI SKID EC IVORY | 05 |
| BFM ANTI SKID EC PINK | 09 |
| BFM ANTI SKID EC PISTA | 10 |
| BFM ANTI SKID EC SILVER | 02 |
| BFM ANTI SKID EC SLATE | 02 |
| BFM ANTI SKID EC WENGE | 08 |
| HFM ANTI-SKID EC DIAMOND SANDUNE | 06 |
| HFM ANTI-SKID EC GRACE WOOD BROWN | 07 |
| HFM ANTI-SKID EC GREEN DK | 10 |
| HFM ANTI-SKID EC KENTE BLUE DK | 04 |
| HFM ANTI-SKID EC KHADI GRIS DK | 02 |
| HFM ANTI-SKID EC MILLER BLUE DK | 03 |
| HFM ANTI-SKID EC PENTA GREY DK | 03 |
| HFM ANTI-SKID EC RIOS BROWN DK | 05 |
| HFM ANTI-SKID EC SEA WATER | 04 |
| HFM ANTI-SKID EC STATUARIO BIANCO | 01 |
| HFM ANTI-SKID EC STRIPES PINK DK | 09 |
| HFM ANTI-SKID EC STRIPES PURPLE DK | 09 |
| HFM ANTI-SKID EC WOODY BROWN | 07 |
| HFM ANTI-SKID EC WOODEN MOSAIC | 07 |



Anti Skid Floor Tile Collection

300x300mm



Listed on BSE (530365) for 20+ years.
And also on NSE (ORIENTBELL).



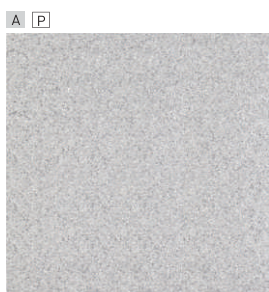
Preview Shown: HFM ANTI-SKID EC STATUARIO BIANCO



300x300mm |
HFM ANTI-SKID EC
STATUARIO BIANCO



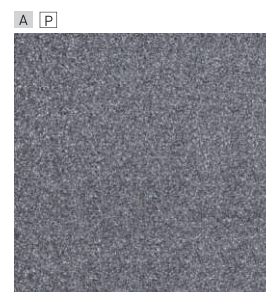
Preview Shown: BFM ANTI SKID EC SILVER



300x300mm |
 BFM ANTI SKID EC SILVER



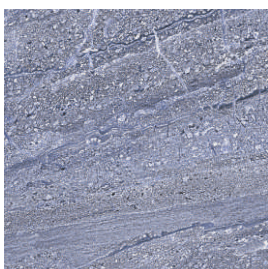
300x300mm |
 HFM ANTI-SKID EC KHADI
 GRIS DK



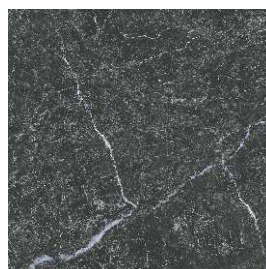
300x300mm |
 BFM ANTI SKID EC SLATE



Preview Shown: HFM ANTI-SKID EC MILLER BLUE DK



300x300mm |
HFM ANTI-SKID EC MILLER
BLUE DK



300x300mm |
HFM ANTI-SKID EC PENTA
GREY DK



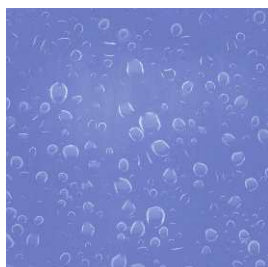
Preview Shown: BFM ANTI SKID EC BLUE

A P

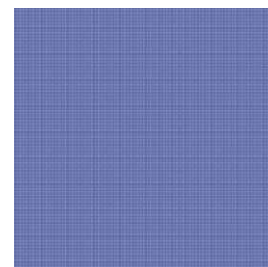


G4
F2
R2

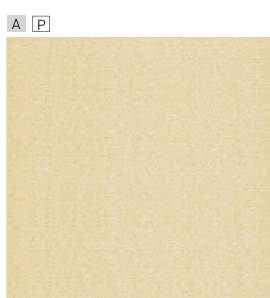
300x300mm |
BFM ANTI SKID EC BLUE



300x300mm |
HFM ANTI-SKID EC SEA
WATER



300x300mm |
HFM ANTI-SKID EC KENTE
BLUE DK



300x300mm |
 BFM ANTI SKID EC IVORY

G4
 F2
 R2



300x300mm |
 BFM ANTI SKID EC
 FUSION IVORY

G4
 F4
 R4



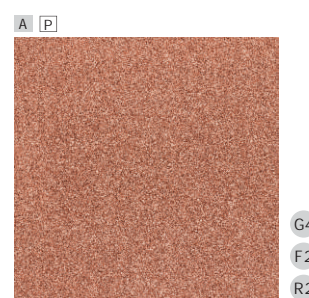
300x300mm |
 HFM ANTI-SKID EC RIOS
 BROWN DK



300x300mm |
 BFM ANTI SKID EC BROWN



300x300mm |
 HFM ANTI-SKID EC
 DIAMOND SANDUNE



300x300mm |
 BFM ANTI SKID EC COFFEE
 BROWN



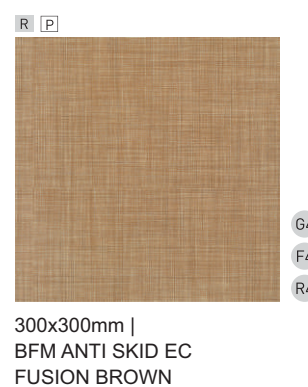
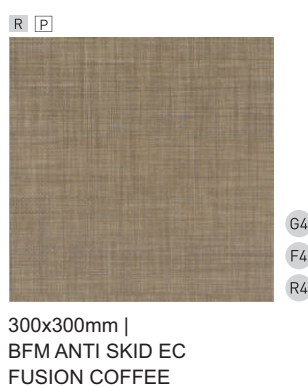
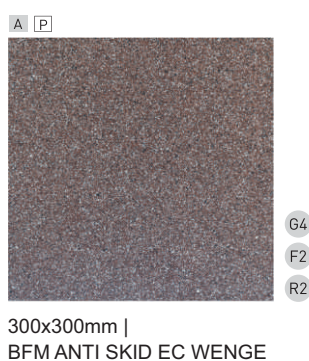
300x300mm |
 HFM ANTI-SKID EC GRACE
 WOOD BROWN



300x300mm |
 HFM ANTI-SKID EC
 WOODY BROWN



300x300mm |
 HFM ANTI-SKID EC
 WOODEN MOSAIC



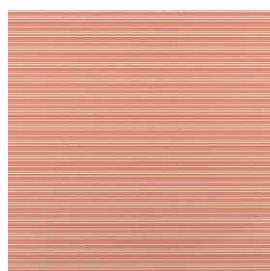


Preview Shown: BFM ANTI SKID EC PINK

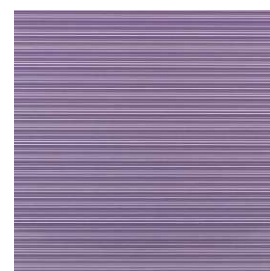


300x300mm |
 BFM ANTI SKID EC PINK

G4
 F2
 R2



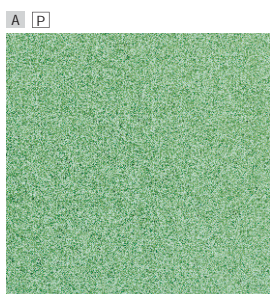
300x300mm |
 HFM ANTI-SKID EC STRIPES
 PINK DK



300x300mm |
 HFM ANTI-SKID EC STRIPES
 PURPLE DK

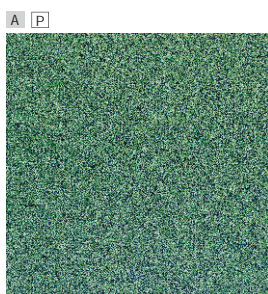


Preview Shown: BFM ANTI SKID EC PISTA



300x300mm |
 BFM ANTI SKID EC PISTA

G4
 F2
 R2



300x300mm |
 BFM ANTI SKID EC GREEN

G4
 F2
 R2



300x300mm |
 HFM ANTI-SKID EC GREEN DK

TECHNICAL SPECIFICATIONS

Anti Skid Tiles

Packing Details

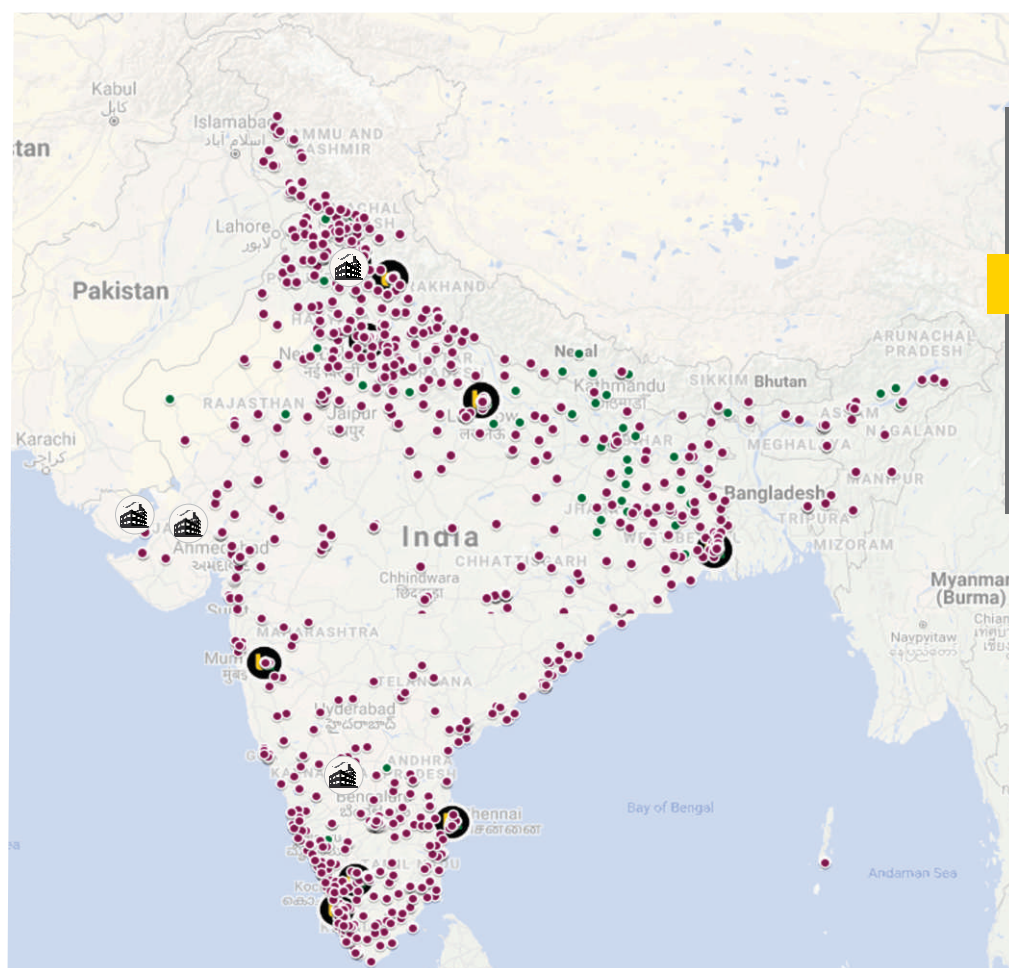
| Size | No. of Tiles | Covered Area Per Carton | |
|------------------|--------------|-------------------------|----------------|
| (In mm.) | Per Carton | (In Sq. Mtr.) | (In Sq. Ft.) |
| 300x300 Edge Cut | 10 | 0.87 | 9.36 |

As Per Indian Standard (IS 15622:2017) Group B II a


| As Per Indian Standard (IS 15622:2017) Group B II a | | | | |
|---|--|--|-----------|--------------------------------------|
| Characteristics | Testing Methods | Standard as Per IS 15622:2017 3 < E ≤ 6%(Group B II a) | | OBL Norms |
| Dimension & Surface Quality | | | | |
| Deviation in Length & Width | IS 13630 Part 1/ ISO 10545-2 | Unrectified | Rectified | Conforms |
| | | ± 0.4 % | ± 0.1 % | |
| Deviation in Thickness | | ± 5.0 % | | ±4.0% |
| Straightness of Sides | | ± 0.3 % | ± 0.1 % | Conforms |
| Rectangularity | | ± 0.3 % | ± 0.1 % | Conforms |
| Surface Flatness | | ± 0.5 % | | ± 0.3 % 😊😊 |
| Surface Quality | | Min. 95 % tiles should be free from visible defects | | Conforms |
| Physical Properties | | | | |
| Water Absorption | IS 13630 Part 2/ ISO 10545-3 | Avg 3 < E ≤ 6, Individual Max, 6.2 | | 5-6% |
| Modulus of Rupture in N/mm ² | IS 13630 Part 6/ ISO 10545-4 | Avg 22, Individual 20, Min | | >28 😊😊 |
| Breaking Strength in N | | < 7.5 mm thickness: 600 Min, ≥ 7.5 mm thickness: 1000 Min | | >1000/>600 😊 |
| Moisture Expansion in mm/m | IS 13630 Part 3 | 0.03, Max | | 0.02 |
| Scratch Hardness of Surface (Mohs) | IS 13630 Part 13 | 4, Min | | Min 5 |
| Resistance to Surface Abrasion of glazed tiles (Class I to V) | IS 13630 Part 11/ ISO 10545-7 | Class II, Min | | PEI Class 3-5 (depending on surface) |
| Co efficient of Linear thermal expansion from ambient temperature to 100°C | IS 13630 Part 4/ ISO 10545-8 | 9x10 ⁻⁶ K ⁻¹ ,Max | | Conforms |
| Thermal Shock Resistance | IS 13630 Part 5 | 10 Cycles, Min | | Passed 😊 |
| Crazing Resistance | IS 13630 Part 9/ ISO 10545-9 | 4 Cycles @ 7.5 Bar, Min | | Passed 😊 |
| Frost Resistance | IS 13630 Part 10 | Required, if agreed | | NA |
| Impact Resistance-co efficient of restitution | IS 13630 Part 14 | 0.55, Min | | Conforms |
| Chemical Properties | | | | |
| Stain Resistance | IS 13630 Part 8/ ISO 10545-13 and ISO 10545-14 | Class I, Min | | Conforms |
| Resistance to household chemicals | | Class AA, Min | | Conforms |
| Resistance to acids and alkalis (with exception of hydrofluoric acid and its compounds) | | Required, If agreed | | Min Class AA |

NOTE: Certain amount of Size and Shade Variation is inherent in all ceramic products. Within the limits of printed material, the colors and aesthetics of the products correspond closely to those of illustrated products. Prospective customers are advised to inspect a sample of the tile before ordering and laying. At all points of time, the company liability is restricted to the purchase value of tiles.

Every effort has been made to ensure the accuracy of the information given. However, the company reserves the right to delete & change, any of the items, colors, sizes & technical specifications without any prior notice.



A Network of
2500+
Channel Partners

- Franchise Owned Boutiques
- Channel Partners
- b Company Owned Boutiques
-  Plants

ORIENT BELL TILE BOUTIQUE

CHANDIGARH

SCO - 6, First Floor, Sector 7-C, Madhya Marg, Chandigarh-160 019,
Tel.: +91 172 4624 342

CHENNAI

New No: 85, Old No: 30, Maharaja Tower, 2nd Floor, 1st Avenue,
Ashok Nagar, (Above Kotak Mahindra Bank), Chennai-600 083,
Tel.: +91 44 4213 8687

COCHIN

"SURYA GAYATRI", Building No. 32/8, B3, Puthiya Road, New Junction,
(Opposite Holiday Inn Hotel) Ernakulam By Pass Road, Cochin-682 031
Tel.: +91 97457 68058

COIMBATORE

11, 1st Floor, Venkata Samy Road (East), R.S. Puram,
Coimbatore-641 002,
Tel.: +91 89799 41666

DEHRADUN

Duggal Complex (Near Kamla Palace Hotel), GMS Road,
Dehradun-248 001,
Tel.: +91 97197 01064

KOLKATA

8/1, Burdwan Road, Alipore, Kolkata-700 027,
Tel.: +91 33 4068 4046/7

LUCKNOW

Raj Rani Apartment, Ground Floor, Near Beej Nigam, Badhshah Nagar Railway
Station, Lucknow-226 006,
Tel.: +91 99847 86404

NEW DELHI

M-47, GK-II, M Block, New Delhi-110 048,
Tel.: +91 11 4068 7468/69

PUNE

Shop No. 3 and 4, A Tower Vega Centre, C.T.S No. 710, Final Plot No. 401/1,
Shankarasheth Road, Gultekdi, Swargate, Pune-411 037
Tel.: +91 73910 72247

VADODRA DISPLAY CENTRE

78-79, 2nd Floor, Surya Kiran Complex, Beside Banker Heart Institute,
Old Padra Road, Vadodara-390007, Gujarat
Tel.: +91 98254 14113



Making Tile Selection Easier



Find tiles similar to a reference image



Try floor tiles selected by you in your room



Visualise selected tiles & get a quote



Share layout for a personalised render*

www.orientbell.com

CORPORATE OFFICE:

Iris House, 16 Business Centre,
Nangal Raya, New Delhi-110046, India
Tel: +91-11-47119100, Fax: +91 -11-2852 1273

REGISTERED OFFICE:

8 Industrial Area, Sikandrabad-203 205 (UP), India
Tel: +91-5735-222-203 / 24, +91-8191004575/ 76
Fax: +91 -5735 222 642

CUSTOMER CARE:

customer@orientbell.com
Missed Call : 87507 11111
Whatsapp : 87507 33333

CIN: L14101UP1977PLC021546

Please join us on social media

