

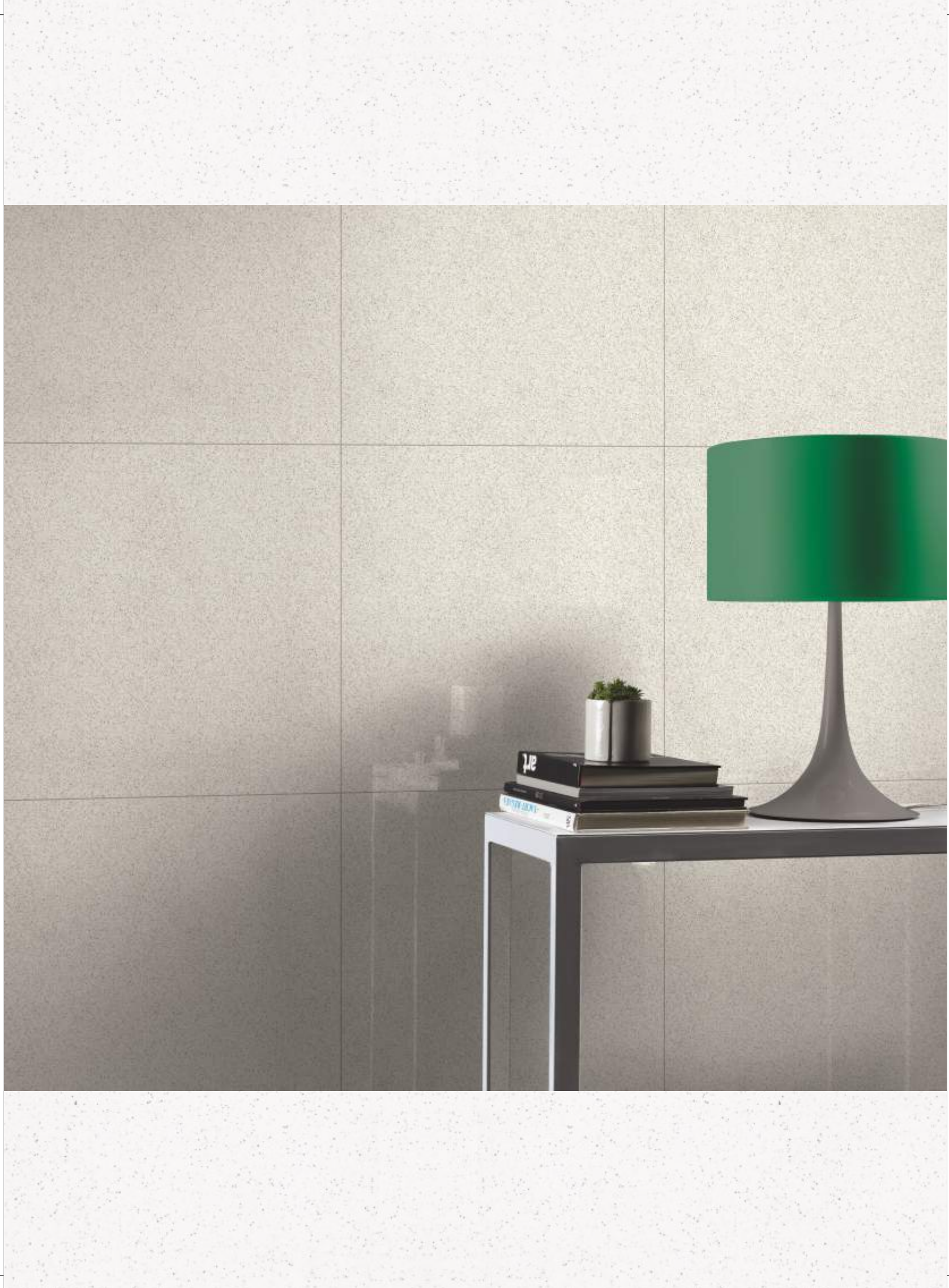


THE  
**POWER** OF  
**TWO**

IMPECCABLE LOOKS  
FOR IMPRESSIVE  
INTERIORS.

**SAHARA**  
**DOUBLE BODY**









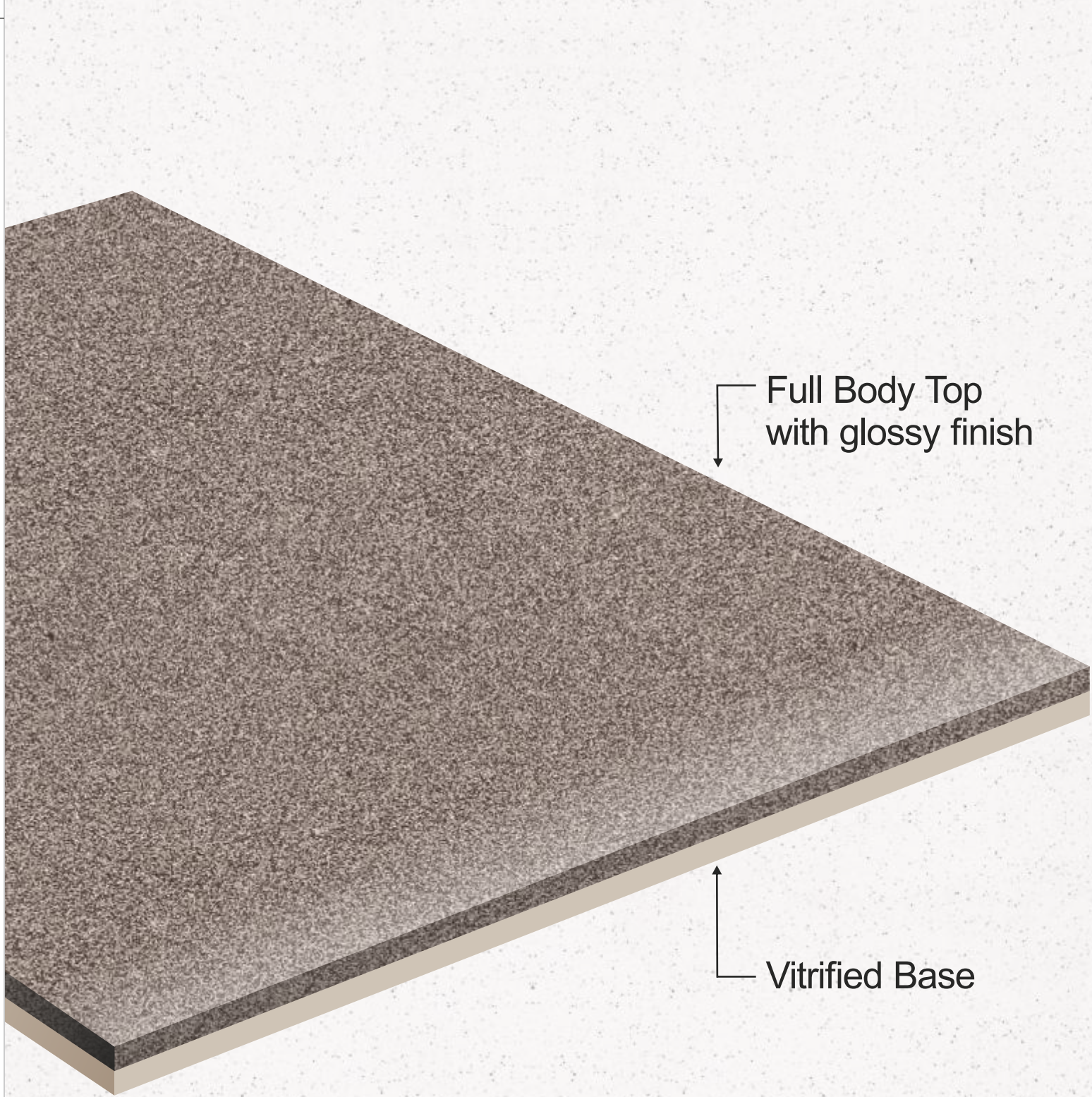
P R E S E N T S

# SAHARA DOUBLE BODY

if you are looking for impeccable looks at affordable rates, Sahara Double Body tiles is your best choice. Available in six different shades, Sahara Double Body tiles comes with a vitrified base & fullbody top. Sahara Double body tiles can be used both on walls and floor & the gloss finish of the tiles reflects natural elegance.







Full Body Top  
with glossy finish

Vitrified Base

IMPECCABLE LOOKS  
FOR IMPRESSIVE  
INTERIORS.

THE  
**POWER** OF  
**TWO**



# SAHARA DOUBLE BODY

---



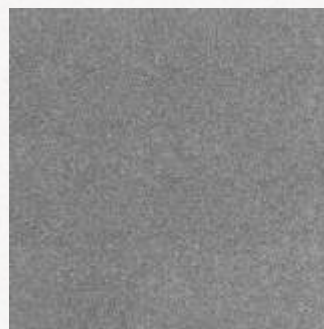
Sahara Double Body Glossy Ivory 01



Sahara Double Body Glossy Carbon 06



Sahara Double Body Glossy Beige 05



Sahara Double Body Glossy Nero 04



Sahara Double Body Glossy Crema 02



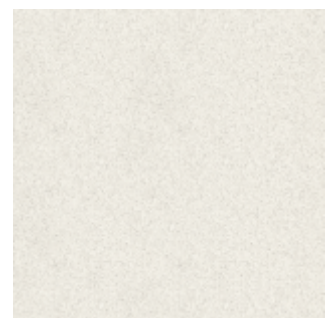
Sahara Double Body Glossy Gris 03

# SAHARA DOUBLE BODY



Sahara Double Body Glossy Ivory





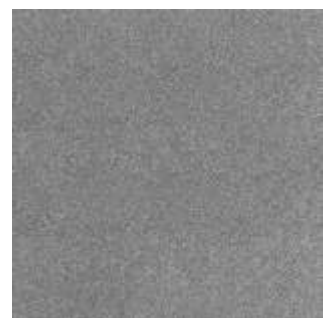
Sahara Double Body Glossy Creama

# SAHARA DOUBLE BODY



Sahara Double Body Glossy Gris





Sahara Double Body Glossy Nero

# SAHARA

## DOUBLE BODY



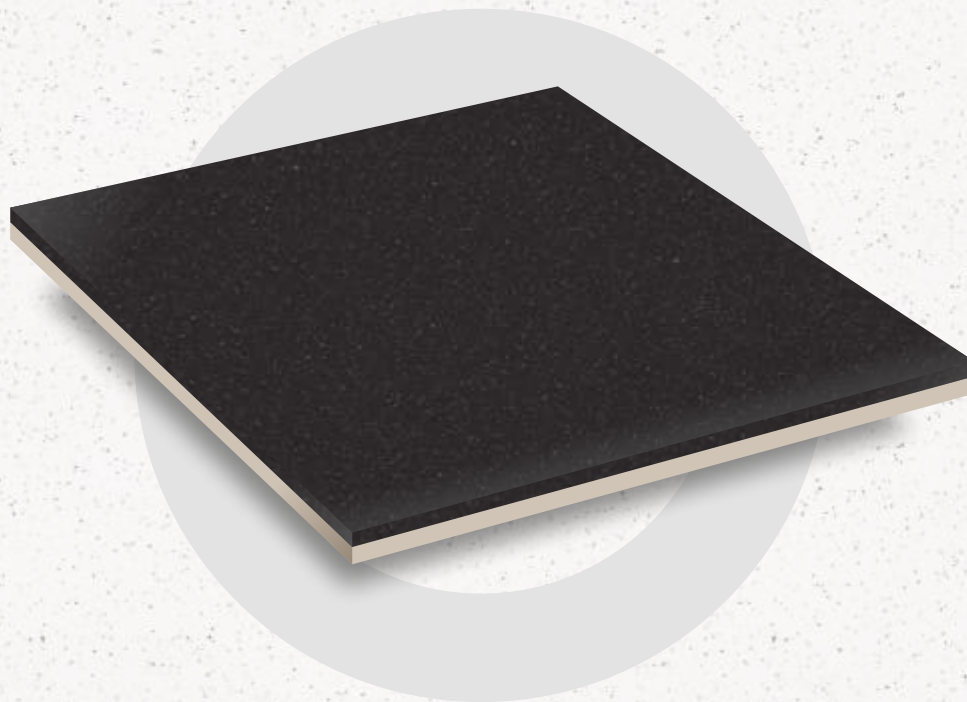
Sahara Double Body Glossy Beige





Sahara Double Body Glossy Carbon

# SAHARA DOUBLE BODY



SAHARA DOUBLE BODY GLOSSY CARBON

**YOUR BEST ALTERNATIVE FOR GRANITE!**



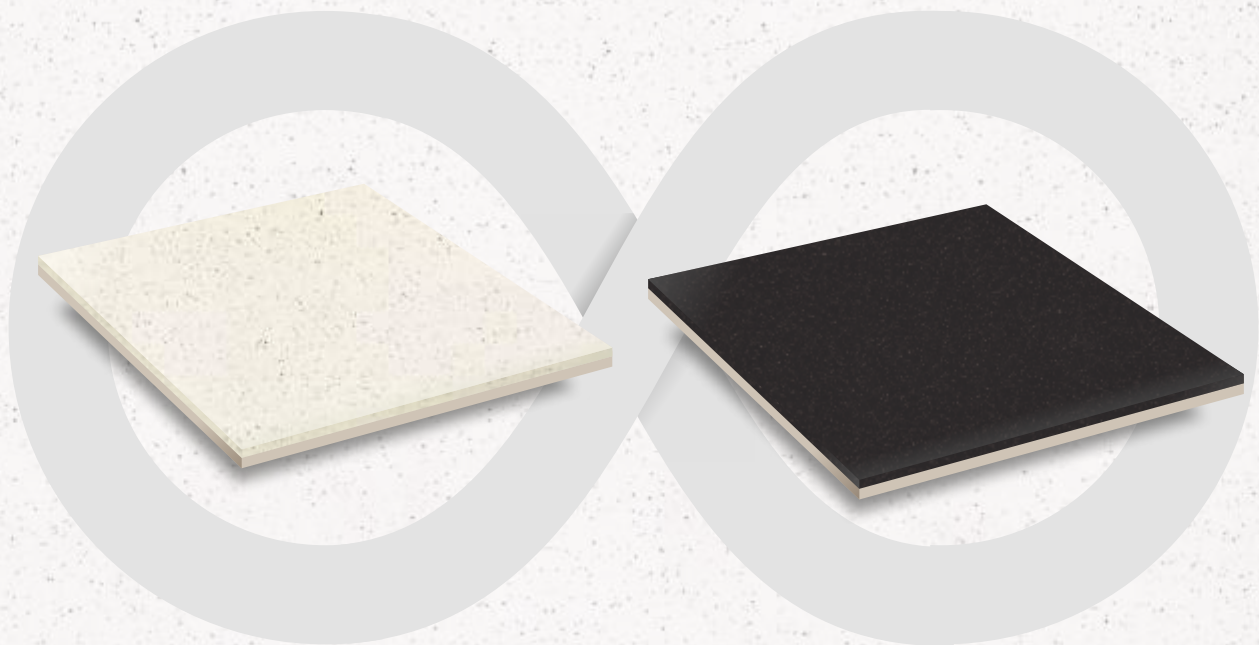






**SAHARA**  
**DOUBLE BODY**

**INFINITE POSSIBILITIES**



THE **POWER** OF  
**IVORY** & **CARBON**





Preview Shown: Sahara Double Body Glossy Carbon & Ivory

# SAHARA DOUBLE BODY



Preview Shown: Sahara Double Body Glossy Carbon & Ivory





Preview Shown: Sahara Double Body Glossy Carbon & Ivory

# SAHARA DOUBLE BODY



Preview Shown: Sahara Double Body Glossy Beige & Crema





Preview Shown: Sahara Double Body Glossy Ivory & Beige

# SAHARA DOUBLE BODY



Preview Shown: Sahara Double Body Glossy Gris & Nero





Preview Shown: Sahara Double Body Glossy Beige & Crema

# TECHNICAL SPECIFICATIONS

# Sahara Double Body Tiles

## Packing Details

Size (In mm.)	No. of Tiles Per Carton	Covered Area Per Carton	
		( In Sq. Mtr. )	( In Sq. Ft. )
600X600 mm (WZ)	4	1.44	15.50

## As per Indian Standard (IS 15622:2017) Group B Ia

Characteristics	Standard Test Method	IS 15622 Requirements	OBL Norms
<b>Dimension &amp; Surface Quality</b>			
Deviation in Size (length & Width)	IS 13630 (Part 1):2006	± 0.1 %	± 0.1 %
Deviation in thickness		± 5.0 %	± 3.0 %
Straightness of sides		± 0.1 %	± 0.1 %
Squareness		± 0.1 %	± 0.1 %
Surface Flatness		± 0.50 %	± 0.2 % ☺☹
Surface Quality		Min 95% tiles should be free from visible defects	Conform
<b>Physical Properties</b>			
Water absorption %	IS 13630 (Part 2):2006	E ≤0.08%	E ≤0.05% ☺
Modulus of rupture N/mm <sup>2</sup>	IS 13630 (Part 6):2006	Avg≥35 N/mm <sup>2</sup>	Min 38 N/mm <sup>2</sup> ☺
Breaking Strength N	IS 13630 (Part 6):2006	Min1300	>1300 ☺
Scratching Resistance	IS 13630 (Part 13):2006	Min 5	≥5
Deep Abrasion	IS 13630 (Part 12):2006	140 Max	100 Max ☺
<b>Chemical Properties</b>			
Resistance to Staining	IS 13630 (Part 8):2006	Min Class 2	Conform
Resistance to household Chemicals		Min, Class AA	Conform
<b>Thermal Specifications</b>			
Thermal Shock Resistance	IS 13630 (Part 5):2006	10 Cycles Min	Conform
Thermal Expansion	IS 13630 (Part 4):2006	Min, 6x10 <sup>-6</sup> at 100° C (K <sup>-1</sup> )	Conform
Frost Resistance	IS:13630 (Part 10):2006	10 Cycles Pass	Conform
Impact Resistance	IS:13630 (Part 14):2006	0.55 minimum	Conform
Bulk Density (gm/cc)	IS:13630 (Part 2):2006	Min 2.2	Conform

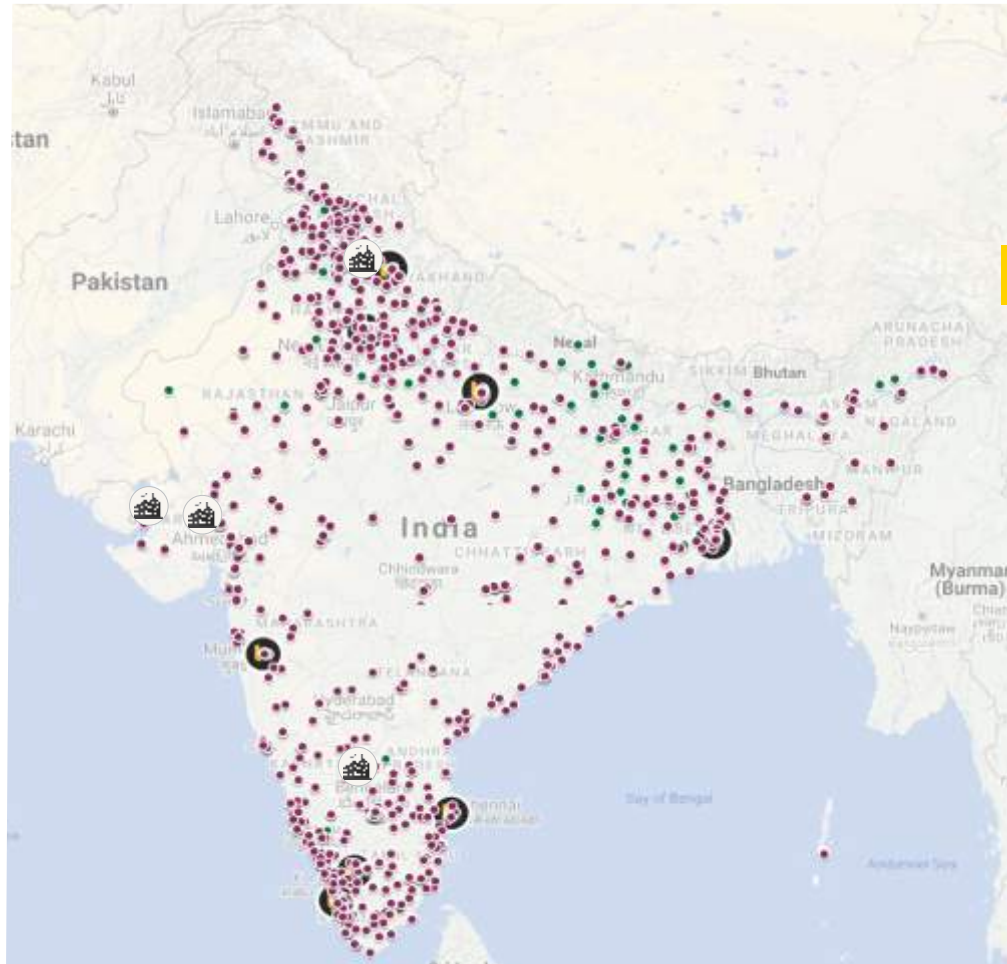
NOTE: Certain amount of Size and Shade variation is inherent in all ceramic products. Within the limits of printed material, the colors and aesthetics of the products correspond closely to those of illustrated products. Prospective customers are advised to inspect a sample of the tile before ordering and laying. At all points of time, the company liability is restricted to the purchase value of tiles.

Every effort has been made to ensure the accuracy of the information given. However, the company reserves the right to delete & change, any of the items, colors, sizes & technical specifications without any prior notice.



Listed on BSE (530365) for 20+ years. And also on NSE (ORIENTBELL).





A Network of  
**2500+**  
 Channel Partners

- Franchise Owned Boutiques
- Channel Partners
- Company Owned Boutiques
- Plants

# ORIENT BELL TILE BOUTIQUE

**CHANDIGARH**  
 SCO - 6, First Floor, Sector 7-C, Madhya Marg, Chandigarh-160 019,  
 Tel.: +91 172 4624 342

**CHENNAI**  
 New No: 85, Old No: 30, Maharaja Tower, 2nd Floor, 1st Avenue,  
 Ashok Nagar, (Above Kotak Mahindra Bank), Chennai-600 083,  
 Tel.: +91 44 4213 8687

**COCHIN**  
 "SURYA GAYATRI", Building No. 32/8, B3, Puthiya Road, New Junction, (Opposite  
 Holiday Inn Hotel) Ernakulam By Pass Road, Cochin-682 031  
 Tel.: +91 97457 68058

**COIMBATORE**  
 11, 1st Floor, Venkata Samy Road (East), R.S. Puram,  
 Coimbatore-641 002,  
 Tel.: +91 89799 41666

**DEHRADUN**  
 Duggal Complex (Near Kamla Palace Hotel), GMS Road,  
 Dehradun-248 001,  
 Tel.: +91 97197 01064

**KOLKATA**  
 8/1, Burdwan Road, Alipore, Kolkata-700 027,  
 Tel.: +91 33 4068 4046/7

**LUCKNOW**  
 Raj Rani Apartment, Ground Floor, Near Beej Nigam, Badhshah Nagar Railway  
 Station, Lucknow-226 006,  
 Tel.: +91 99847 86404

**NEW DELHI**  
 M-47, GK-II, M Block, New Delhi-110 048,  
 Tel.: +91 11 4068 7468/69

**PUNE**  
 Shop No. 3 and 4, A Tower Vega Centre, C.T.S No. 710, Final Plot No. 401/1,  
 Shankarasheth Road, Gultekdi, Swargate, Pune-411 037  
 Tel.: +91 73910 72247

**VADODRA DISPLAY CENTRE**  
 78-79, 2nd Floor, Surya Kiran Complex, Beside Banker Heart Institute,  
 Old Padra Road, Vadodara-390007, Gujarat  
 Tel.: +91 98254 14113



## Making Tile Selection Easier



Find tiles similar to a reference image



Tiles selected by you in your room



Visualise selected tiles & get a quote



Share layout for a personalised render\*

[www.orientbell.com](http://www.orientbell.com)

### CORPORATE OFFICE:

Iris House, 16 Business Centre,  
Nangal Raya, New Delhi-110046, India  
Tel: +91-11-47119100, Fax: +91 -11-2852 1273

### REGISTERED OFFICE:

8 Industrial Area, Sikandrabad-203 205 (UP), India  
Tel: +91-5735-222-203 / 24, +91-8191004575/ 76  
Fax: +91 -5735 222 642

### CUSTOMER CARE:

[customercare@orientbell.com](mailto:customercare@orientbell.com)  
Missed Call : 87507 11111  
Whatsapp : 87507 33333

CIN: L14101UP1977PLC021546

Please join us on social media

