

DOUBLE CHARGE & PRINTED DOUBLE CHARGE TILES

800x1200 MM | 600x1200 MM | 1000x1000 MM |
800x800 MM | 600x600 MM

February, 2020



About OBL

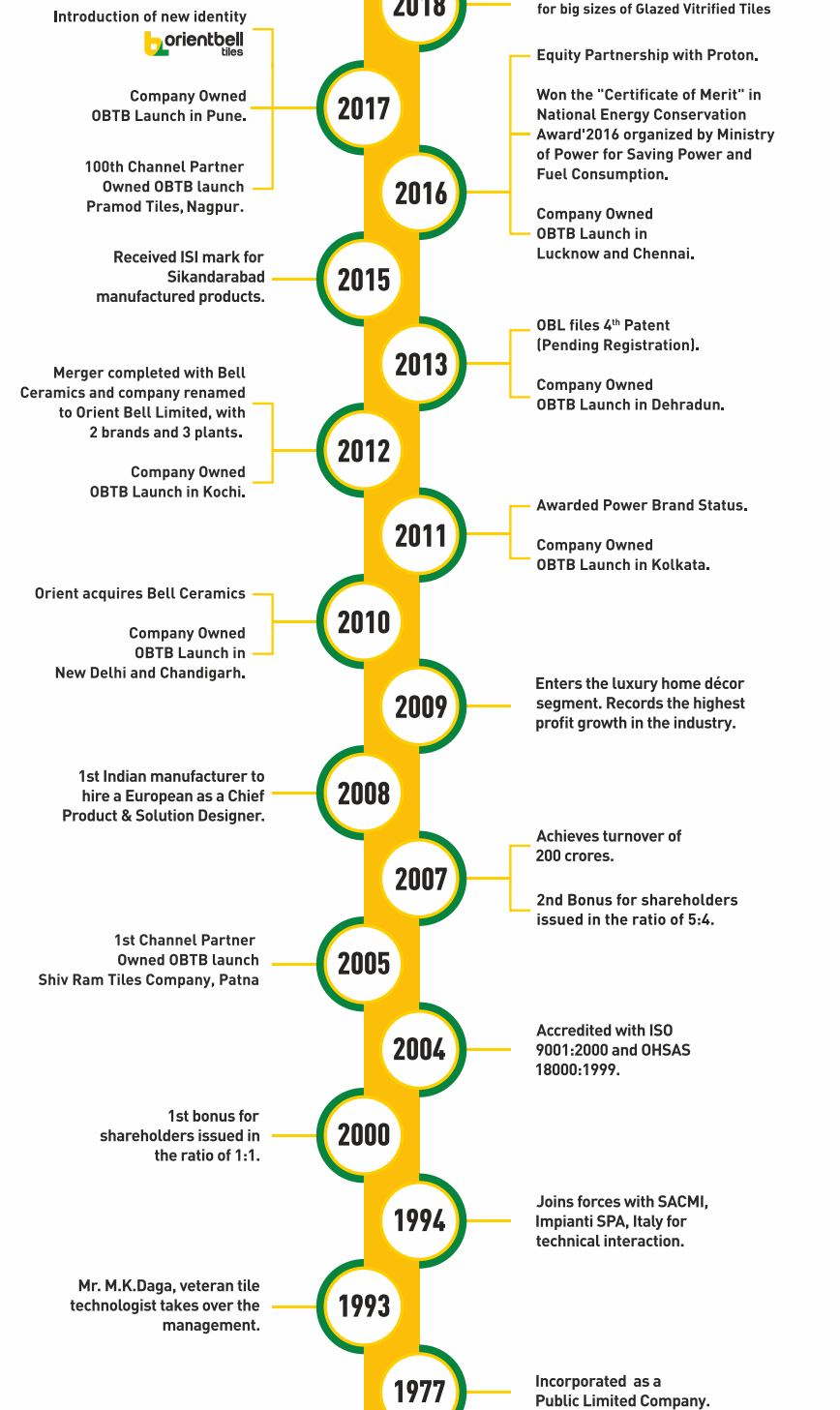
Orient Bell Limited (OBL) is amongst the largest manufacturers of Wall and Floor Tiles. Established in 1977, OBL has been a pioneer in the Industry with a focus on customer-centric innovation.

First to manufacture ultra-vitrified tiles, new product designs & development is a continuous process at OBL. As a result it has an extensive range of tiles with various finishes & textures. It has 4 patent-pending technologies: Forever Tiles, GermFree Tiles, Cool Tiles & Life Tiles.

To display extensive range of tiles, we have a chain of signature showrooms. Privileged to be associated with premier architects and construction agencies of the country, it also counts most leading developers as well as government & public sector institutions as its customers.



- The ISO 9001:2015 accreditation for our quality control management systems reflects the quest for manufacturing international standard products.
- In 2015 our Sikandarabad plant was awarded with prestigious ISI certification for its products.
- In May 2000, OBL was awarded ISO 14001 certification by the internationally recognised BSI Management Systems, UK.
- Our manufacturing units are ISO 14001:2015 certified, the most complete and global expression for an environment friendly industrial company.
- We have been awarded OHSAS 18001 Certification for Health & Safety Standards. No waste water is ever discharged from our factory.
- We were also awarded with "Certificate Of Merit" in 'National Energy Conservation Award' 2016 organised by Ministry of Power for saving Power and Fuel consumption.



INDEX

Marble-Big Size/Double Charge

800X1200 MM CRESENT BIANCO	02
800X1200 MM MERLIN BIANCO	02
800X1200 MM MERLIN CREMA	02
800X1200 MM ROSA WHITE	02

Marble-Big Size/Double Charge

1000X1000 MM TROPICAL NATURAL	03
1000X1000 MM TROPICAL SUPER WHITE	03

Marble/Double Charge

600X1200 MM RIVER BROWN	05
600X1200 MM RIVER WHITE	05

Marble/Double Charge

800X800 MM LUSTRO BROWN	06
800X800 MM LUCENT GOLD	06
800X800 MM LUCENT WHITE	06
800X800 MM SEGMA CREAMA	06
800X800 MM TROPICANA WHITE	06

Marble-Granite/Double Charge

600X1200 MM CANTO ASH	09
600X1200 MM CANTO COPPER	08
600X1200 MM CANTO MULTI	08
600X1200 MM CANTO SILVER	09
600X1200 MM CANTO WHITE	09
600X1200 MM STAR GOLD	08
600X1200 MM STAR ORANGE	08
600X1200 MM STAR SAND	09

Marble-Granite/Double Charge

800X800 MM CANTO CREAMA	12
800X800 MM CANTO DK BLACK	12
800X800 MM CANTO DK COFFEE	12
800X800 MM CANTO OCEAN	12
800X800 MM NU CANTO BEIGE	12

Marble-Granite/Double Charge

600X600 MM CANTO ALMOND	20
600X600 MM CANTO BEIGE	20
600X600 MM CANTO CREAMA	20
600X600 MM CANTO GREEN	20
600X600 MM CANTO JAISALMER	20
600X600 MM CANTO OCEAN	20
600X600 MM CANTO RED	20

600X600 MM LARA CREMA	22
600X600 MM LARA GOLD	22
600X600 MM LARA ROSA	22
600X600 MM LARA SILVER	22
600X600 MM NU CANTO ASH	22
600X600 MM NU CANTO AZUL	20
600X600 MM NU CANTO CARBON	22
600X600 MM NU CANTO CHOCO	22
600X600 MM NU CANTO ROSSA	22
600X600 MM RIVER BEIGE	23
600X600 MM RIVER BLUE	23
600X600 MM RIVER CHOCO	23
600X600 MM RIVER CREAMA	23
600X600 MM RIVER PEARL	23
600X600 MM RIVER RED	23
600X600 MM RIVER SMOKY	23
600X600 MM STAR BLACK DK	16
600X600 MM STAR BROWN DK	16
600X600 MM STAR GREEN DK	16
600X600 MM STAR IVORY	17
600X600 MM STAR MULTI DK	16
600X600 MM STAR ORANGE DK	16
600X600 MM STAR ORANGE	18
600X600 MM STAR PINK	17
600X600 MM STAR RED DK	16
600X600 MM STAR SANDUNE	17
600X600 MM STAR WHITE	17
600X600 MM WINNER BIANCO	13
600X600 MM WINNER CREMA	13
600X600 MM WINNER GOLD	13
600X600 MM WINNER ROSSA	13

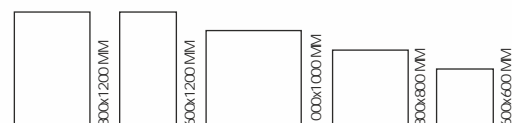
Marble-Printed Double Charge

600X600 MM PDC AMINA	26
600X600 MM PDC ANGELA	26
600X600 MM PDC ATARA	26
600X600 MM PDC BAGOTA	26
600X600 MM PDC KASSIA	26
600X600 MM PDC KERIS	26
600X600 MM PDC ROYALE WHITE	26
600X600 MM PDC SPENCER	26

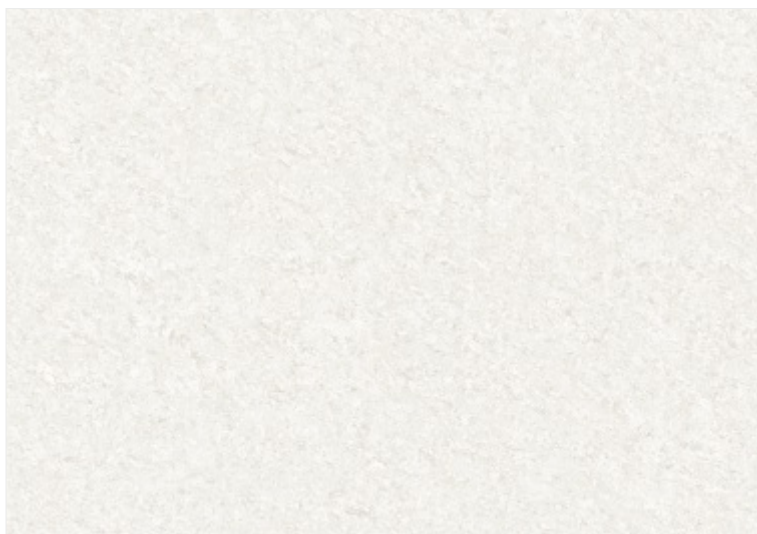
Code Description:

PDC-Printed Double Charge

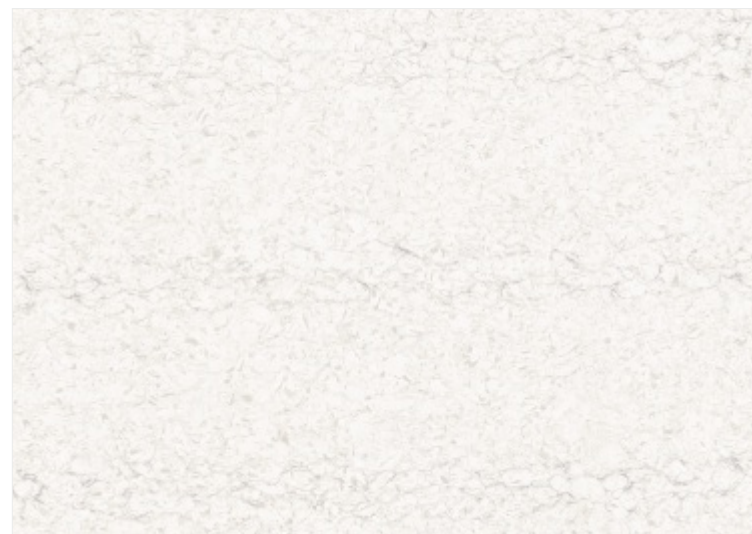
 West Zone Tiles







800X1200 MM | ROSA WHITE



800X1200 MM | MERLIN BIANCO



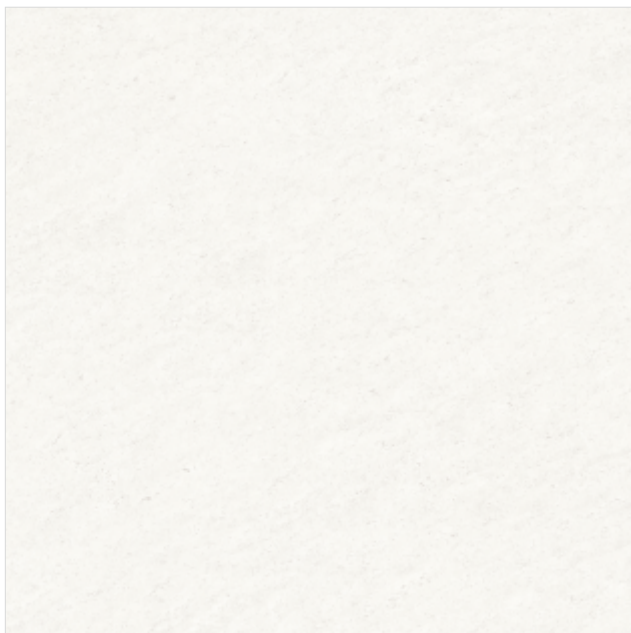
800X1200 MM | MERLIN CREMA



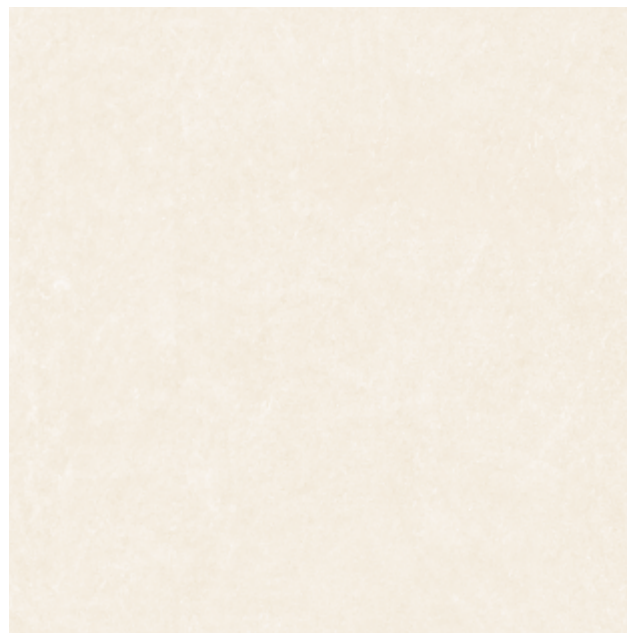
800X1200 MM | CRESENT BIANCO



Double Charge Tiles



1000X1000 MM | TROPICAL SUPER WHITE



1000X1000 MM | TROPICAL NATURAL

1000x1000 MM

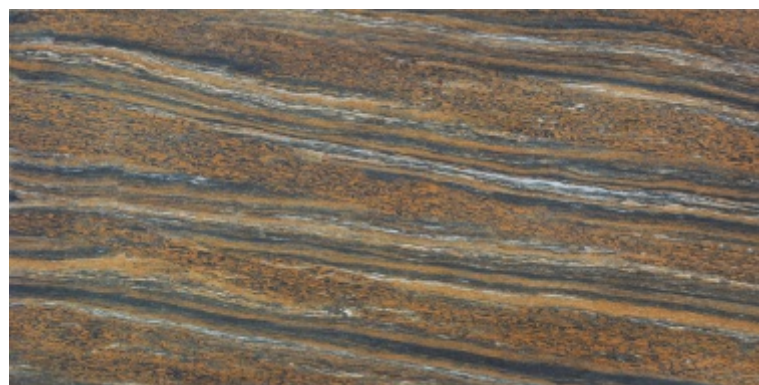


All shown tiles are Glossy





Double Charge Tiles



600X1200 MM | RIVER BROWN



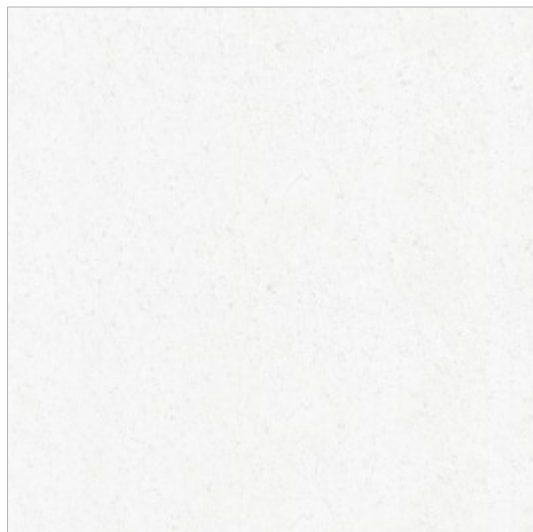
600X1200 MM | RIVER WHITE



All shown tiles are Glossy



RIVER BROWN & RIVER WHITE



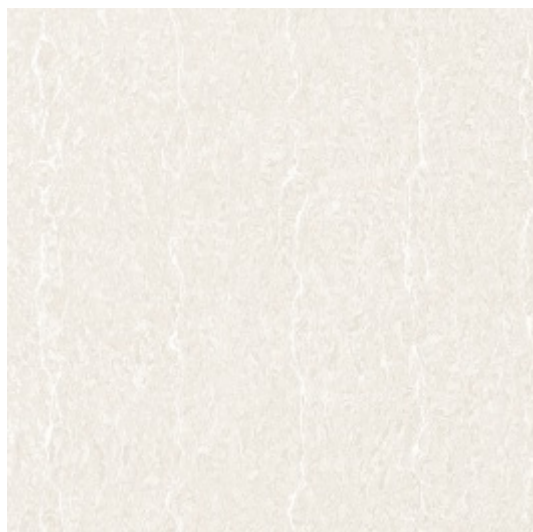
800X800 MM | TROPICANA WHITE



800X800 MM | LUCENT GOLD



800X800 MM | SEGMA CREAMA



800X800 MM | LUCENT WHITE

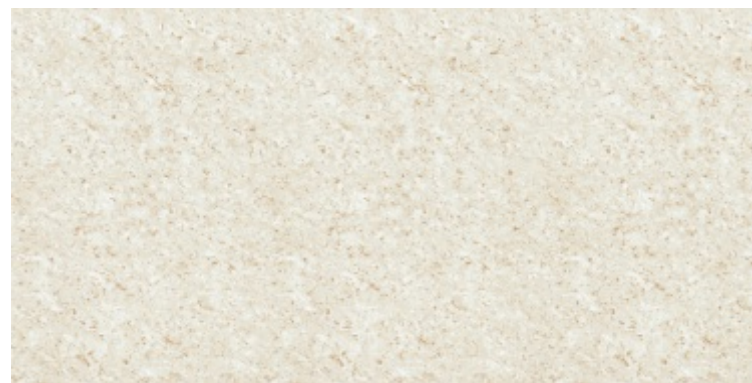


800X800 MM | LUSTRO BROWN





600X1200 MM | CANTO MULTI



600X1200 MM | STAR GOLD



600X1200 MM | STAR ORANGE

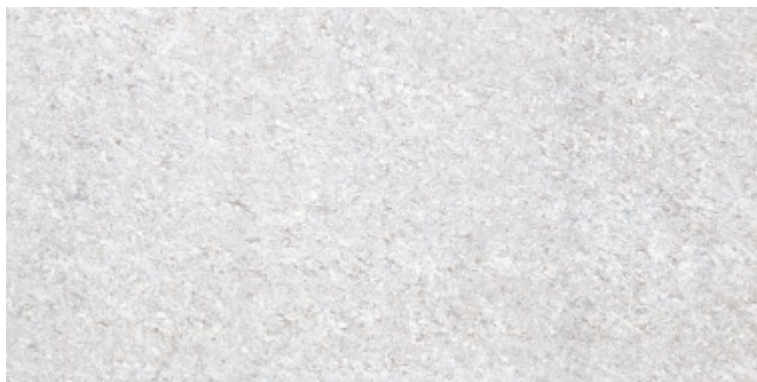


600X1200 MM | CANTO COPPER

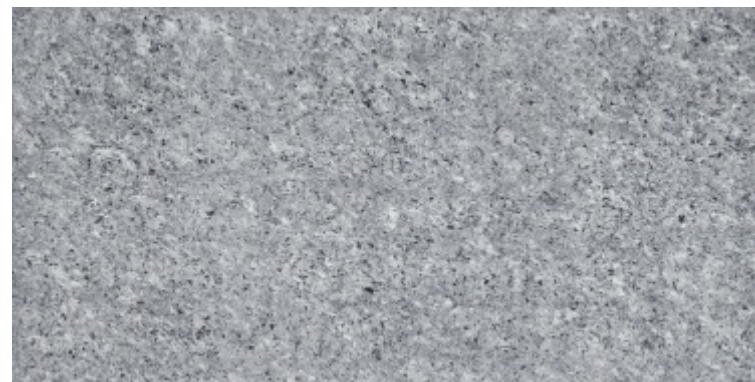




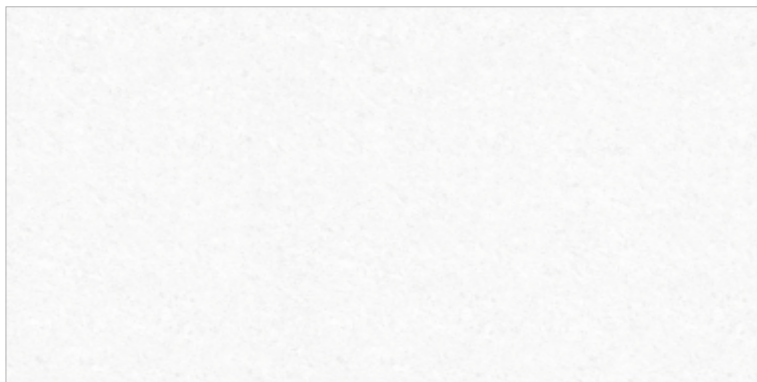
Double Charge Tiles



600X1200 MM | CANTO SILVER



600X1200 MM | CANTO ASH



600X1200 MM | CANTO WHITE



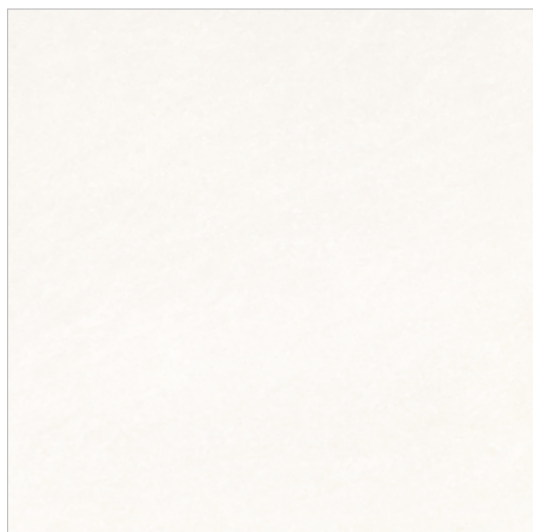
600X1200 MM | STAR SAND



All shown tiles are Glossy







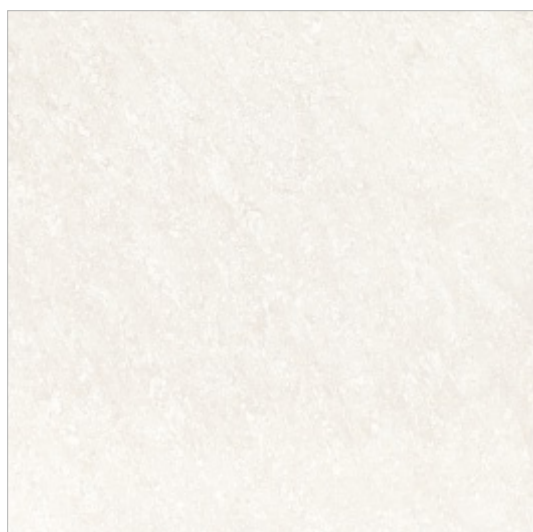
800X800 MM | CANTO OCEAN



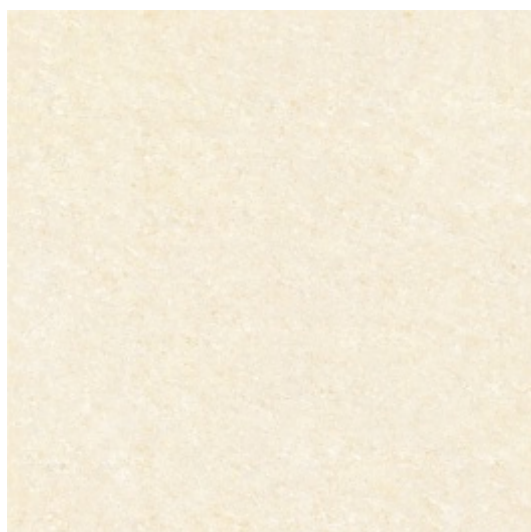
800X800 MM | CANTO DK BLACK



800X800 MM | CANTO DK COFFEE



800X800 MM | CANTO CREAMA



800X800 MM | NU CANTO BEIGE





Double Charge Tiles



600X600 MM | WINNER ROSSA



600X600 MM | WINNER BIANCO



600X600 MM | WINNER GOLD



600X600 MM | WINNER CREMA

600x600 MM



All shown tiles are Glossy



WINNER ROSSA







600X600 MM | STAR BLACK DK



600X600 MM | STAR BROWN DK



600X600 MM | STAR MULTI DK



600X600 MM | STAR ORANGE DK



600X600 MM | STAR RED DK



600X600 MM | STAR GREEN DK





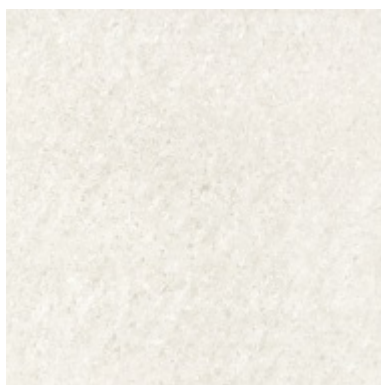
Double Charge Tiles



600X600 MM | STAR IVORY



600X600 MM | STAR PINK



600X600 MM | STAR WHITE



600X600 MM | STAR SANDUNE



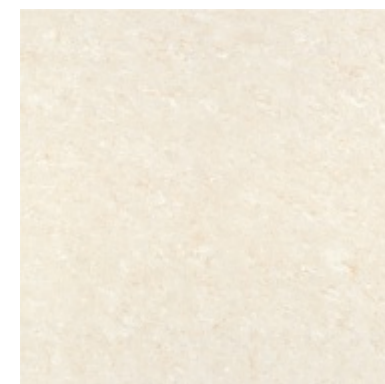
600x600 MM



All shown tiles are Glossy



STAR SANDUNE



600X600 MM | STAR ORANGE



STAR ORANGE

All shown tiles are Glossy

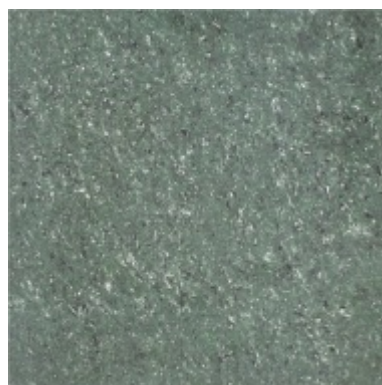


600x600 MM





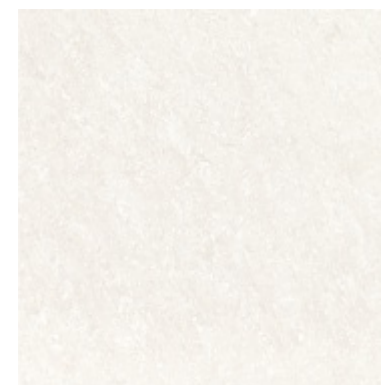
600X600 MM | CANTO ALMOND



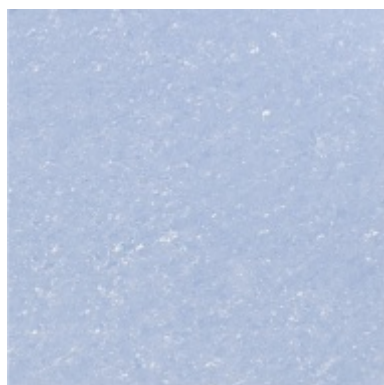
600X600 MM | CANTO GREEN



600X600 MM | CANTO JAISALMER



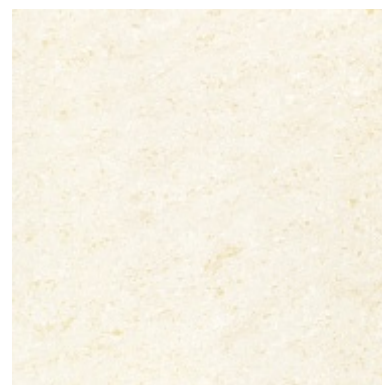
600X600 MM | CANTO CREAMA



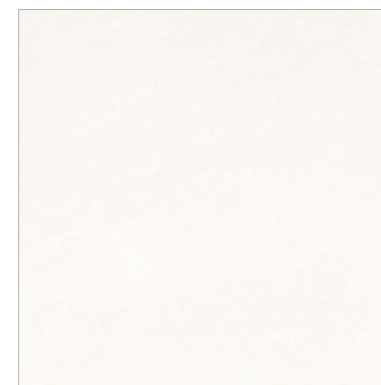
600X600 MM | NU CANTO AZUL



600X600 MM | CANTO RED



600X600 MM | CANTO BEIGE



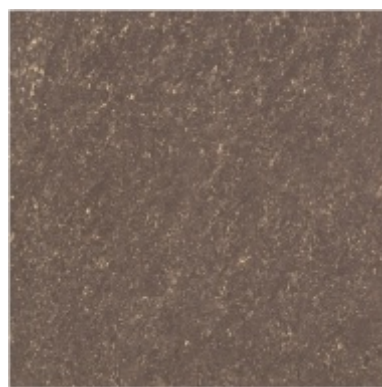
600X600 MM | CANTO OCEAN







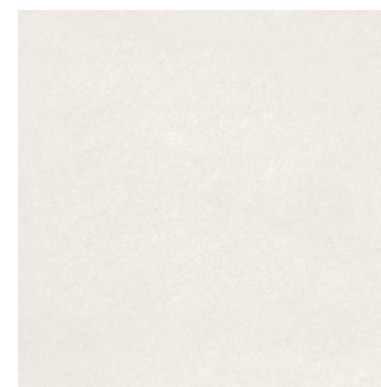
600X600 MM | NU CANTO CARBON



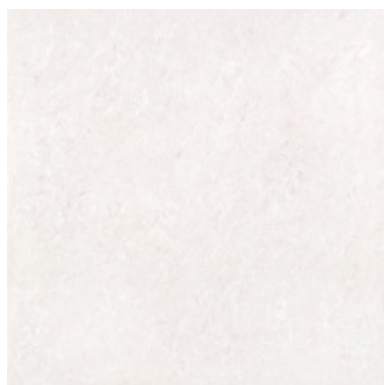
600X600 MM | NU CANTO CHOCO



600X600 MM | LARA SILVER



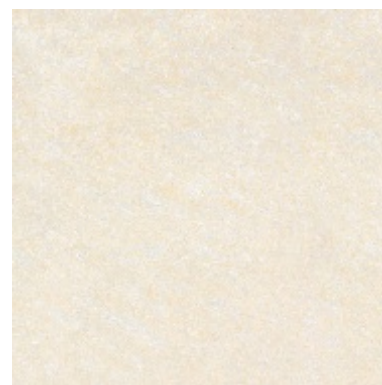
600X600 MM | LARA CREMA



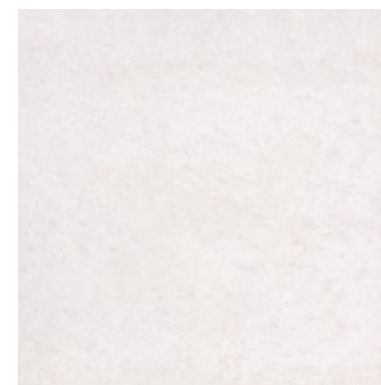
600X600 MM | NU CANTO ROSSA



600X600 MM | NU CANTO ASH



600X600 MM | LARA GOLD

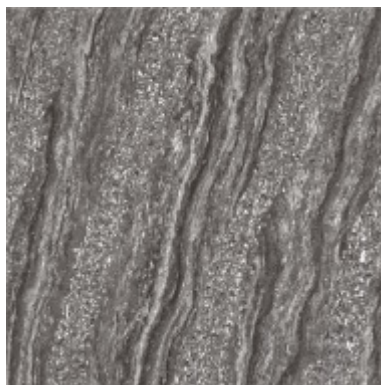


600X600 MM | LARA ROSA





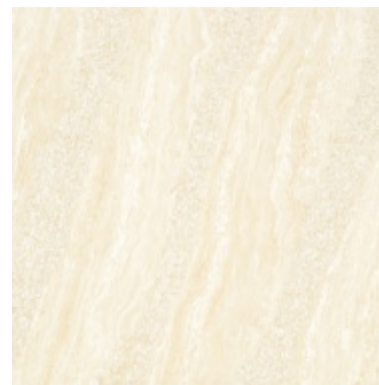
Double Charge Tiles



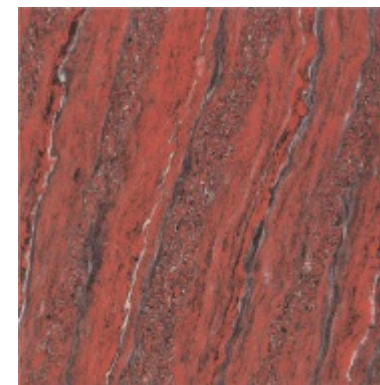
600X600 MM | RIVER SMOKY



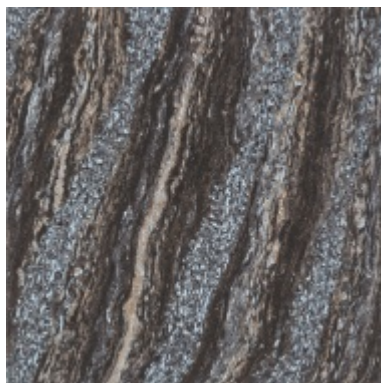
600X600 MM | RIVER PEARL



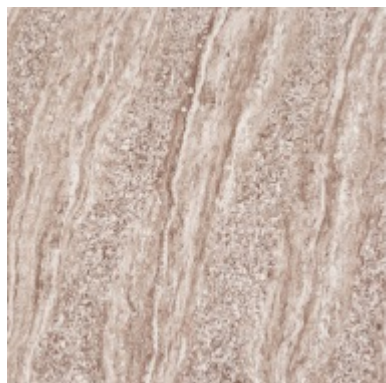
600X600 MM | RIVER CREAMA



600X600 MM | RIVER RED



600X600 MM | RIVER BLUE



600X600 MM | RIVER CHOCO



600X600 MM | RIVER BEIGE



600x600 MM

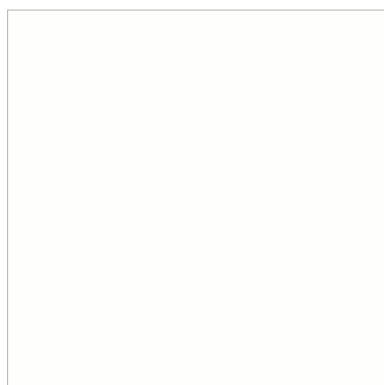


All shown tiles are Glossy

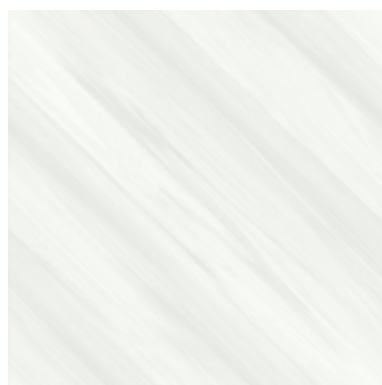


MARBLE-PRINTED DOUBLE CHARGE





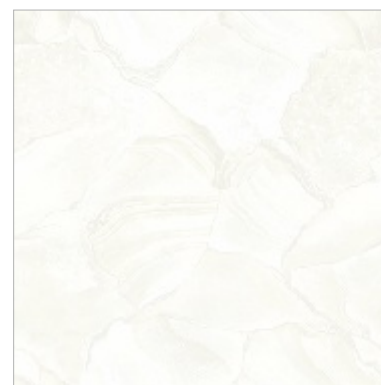
600X600 MM | PDC ROYALE WHITE



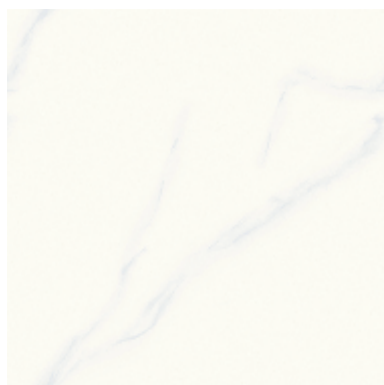
600X600 MM | PDC BAGOTA



600X600 MM | PDC ANGELA



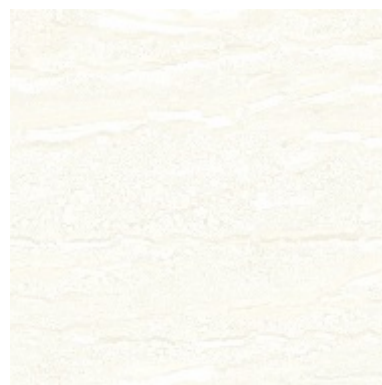
600X600 MM | PDC KASSIA



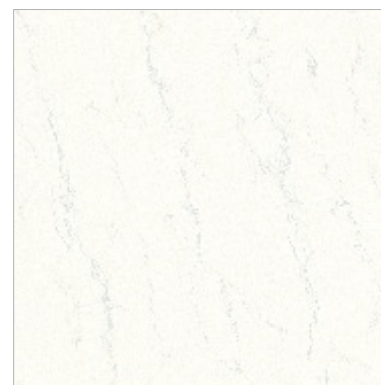
600X600 MM | PDC SPENCER



600X600 MM | PDC AMINA



600X600 MM | PDC KERIS



600X600 MM | PDC ATARA



All shown tiles are Glossy



600x600 MM

TECHNICAL SPECIFICATIONS

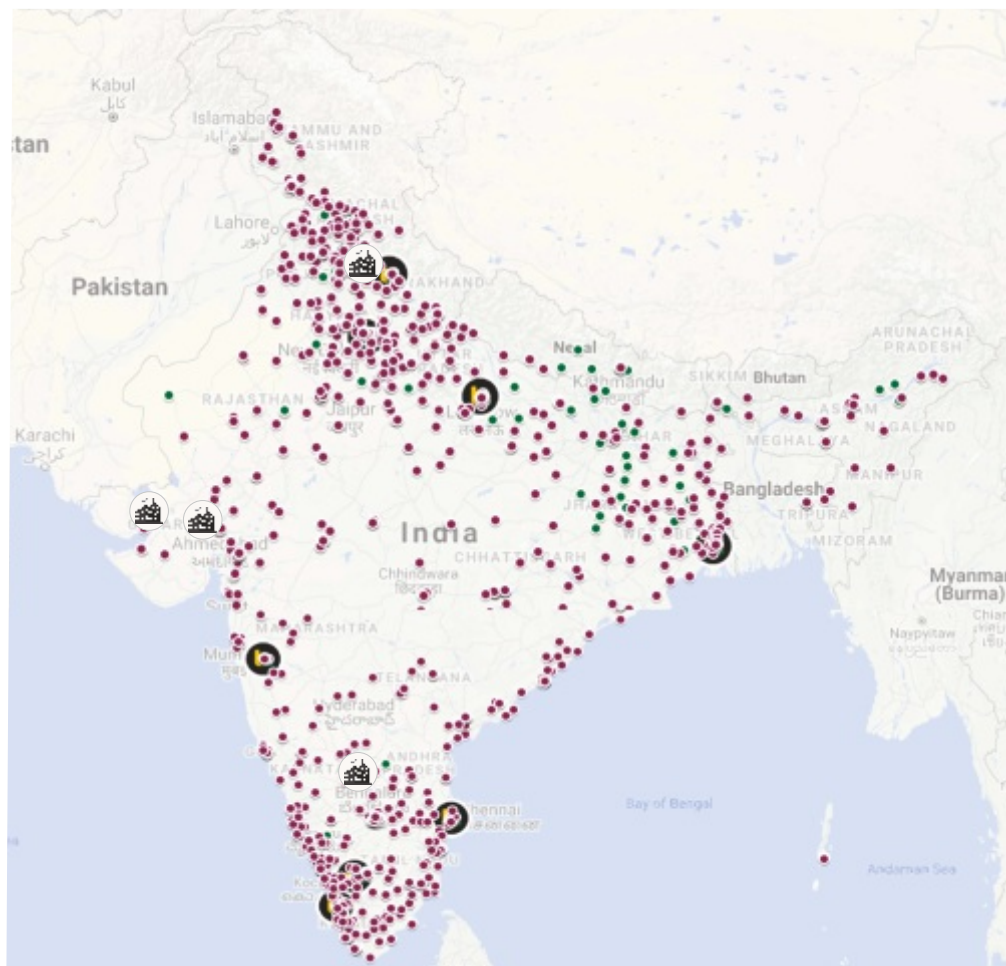
Double Charge | Printed Double Charge

Packing Details			
Size	No. of Tiles Per Carton	Covered Area Per Carton	
(In mm.)		(In Sq. Mtr.)	(In Sq. ft.)
1000X1000 (West Zone)	2	2.00	21.53
800X1200 (West Zone)	2	1.92	20.67
600X1200 (West Zone)	2	1.44	15.5
800X800 (West Zone)	3	1.92	20.67
600X600 (West Zone)	4	1.44	15.50

As per Indian Standard (IS 15622:2017) Group B Ia			
Characteristics	Standard Test Method	IS 15622 Requirements	OBL Norms
Dimension & Surface Quality	IS 13630 (Part 1):2006		
Deviation in Length & Width		±0.1%	± 0.1 %
Deviation in Thickness		±5.0%	± 3.0 %
Straightness of Sides		±0.1%	± 0.1 %
Squareness		±0.1%	± 0.1 %
Surface Flatness		±0.50%	± 0.2 % ☺☺
Surface Quality		Min. 95 % tiles should be free from visible defects	Conforms
Physical Properties			
Water Absorption %	IS 13630 (Part 2):2006	E ≤ 0.08	E ≤ 0.05 ☺
Modulus of Rupture in [N/mm ²]	IS 13630 (Part 6):2006	Avg≥35 N/mm ²	>35 N/mm ² ☺
Breaking Strength in N	IS 13630 (Part 6):2006	Min 1300	>1300 ☺
Scratching Resistance	IS 13630 (Part 13):2006	Min 5	≥ 5
Deep Abrasion	IS 13630 (Part 12):2006	140 Max	100 Max ☺
Chemical Properties			
Resistance to Staining	IS 13630 (Part 8):2006	Min, Class 2	Conforms
Resistance to Household Chemicals		Min, Class AA	Conforms
Thermal Specifications			
Thermal Shock Resistance	IS 13630 (Part 5):2006	Min 10 Cycles	Conforms
Thermal Expansion	IS 13630 (Part 4):2006	Max 6X10 ⁻⁶ at 100° c (K ⁻¹)	Conforms
Frost Resistance	IS 13630 (Part 10):2006	10 Cycles pass	Conforms
Impact Resistance	IS 13630 (Part 14):2006	0.55 minimum	Conforms
Bulk Density (gm/cc)	IS 13630 (Part 2):2006	Min 2.2	Conforms

NOTE: Certain amount of Size and Shade variation is inherent in all ceramic products. Within the limits of printed material, the colors and aesthetics of the products correspond closely to those of illustrated products. Prospective customers are advised to inspect a sample of the tile before ordering and laying. At all points of time, the company liability is restricted to the purchase value of tiles.

Every effort has been made to ensure the accuracy of the information given. However, the company reserves the right to delete & change, any of the items, colors, sizes & technical specifications without any prior notice.



ORIENT BELL TILE BOUTIQUE

CHANDIGARH

SCO - 6, First Floor, Sector 7-C, Madhya Marg,
Chandigarh-160 019,
Tel.: +91 172 4624 342

CHENNAI

New No: 85, Old No: 30, Maharaja Tower, 2nd Floor, 1st
Avenue, Ashok Nagar, (Above Kotak Mahindra Bank),
Chennai-600 083,
Tel.: +91 44 4213 8687

COCHIN

"SURYA GAYATRI", Building No. 32/8, B3, Puthiya
Road, New Junction, (Opposite Holiday Inn Hotel)
Ernakulam By Pass Road, Cochin-682 031,
Tel.: +91 97457 68058

COIMBATORE

11, 1st Floor, Venkata Samy Road (East), R.S. Puram,
Coimbatore-641 002,
Tel.: +91 89799 41666

DEHRADUN

Duggal Complex (Near Kamla Palace Hotel), GMS
Road, Dehradun-248 001,
Tel.: +91 97197 01064

KOLKATA

8/1, Burdwan Road, Alipore, Kolkata-700 027,
Tel.: +91 33 4068 4046/7

LUCKNOW

Raj Rani Apartment, Ground Floor, Near Beej Nigam,
Badshah Nagar Railway Station, Lucknow-226 006,
Tel.: +91 99847 86404

NEW DELHI

M-47, GK-II, M Block, New Delhi-110 048,
Tel.: +91 11 4068 7468/69

PUNE

Shop No. 3 and 4, A Tower Vega Centre, C.T.S No. 710,
Final Plot No. 401/1, Shankarasheth Road, Gultekdi,
Swargate, Pune-411 037
Tel.: +91 73910 72247

VADODRA DISPLAY CENTRE

78-79, 2nd Floor, Surya Kiran Complex, Beside Banker
Heart Institute, Old Padra Road,
Vadodara-390 007, Gujarat
Tel.: +91 98254 14113

A Network of

2500-

Channel Partne

 Franchise Owned Boutiques

 Channel Partners

 Company Owned Boutiques

 Plants

Make small spaces look bigger with Orientbell tiles

Big solutions for small bathrooms



orientbell
tiles

WhatsApp : 87507 11111 | Missed Call : 87507 33333

Listed on BSE (530365) for 20+ years.
And also on NSE (ORIENTBELL).

CIN: L14101UP1977PLC021546

CORPORATE OFFICE:

Iris House, 16 Business Centre,
Nangal Raya, New Delhi – 110046, India
Tel: +91-11-47119100

REGISTERED OFFICE:

8 Industrial Area, Sikandrabad – 203 205 (UP), India
Tel: +91-5735-222-203 / 424, +91-8191004575 / 76



www.orientbell.com



OBL/DC/PDC Booklet/Feb.2020